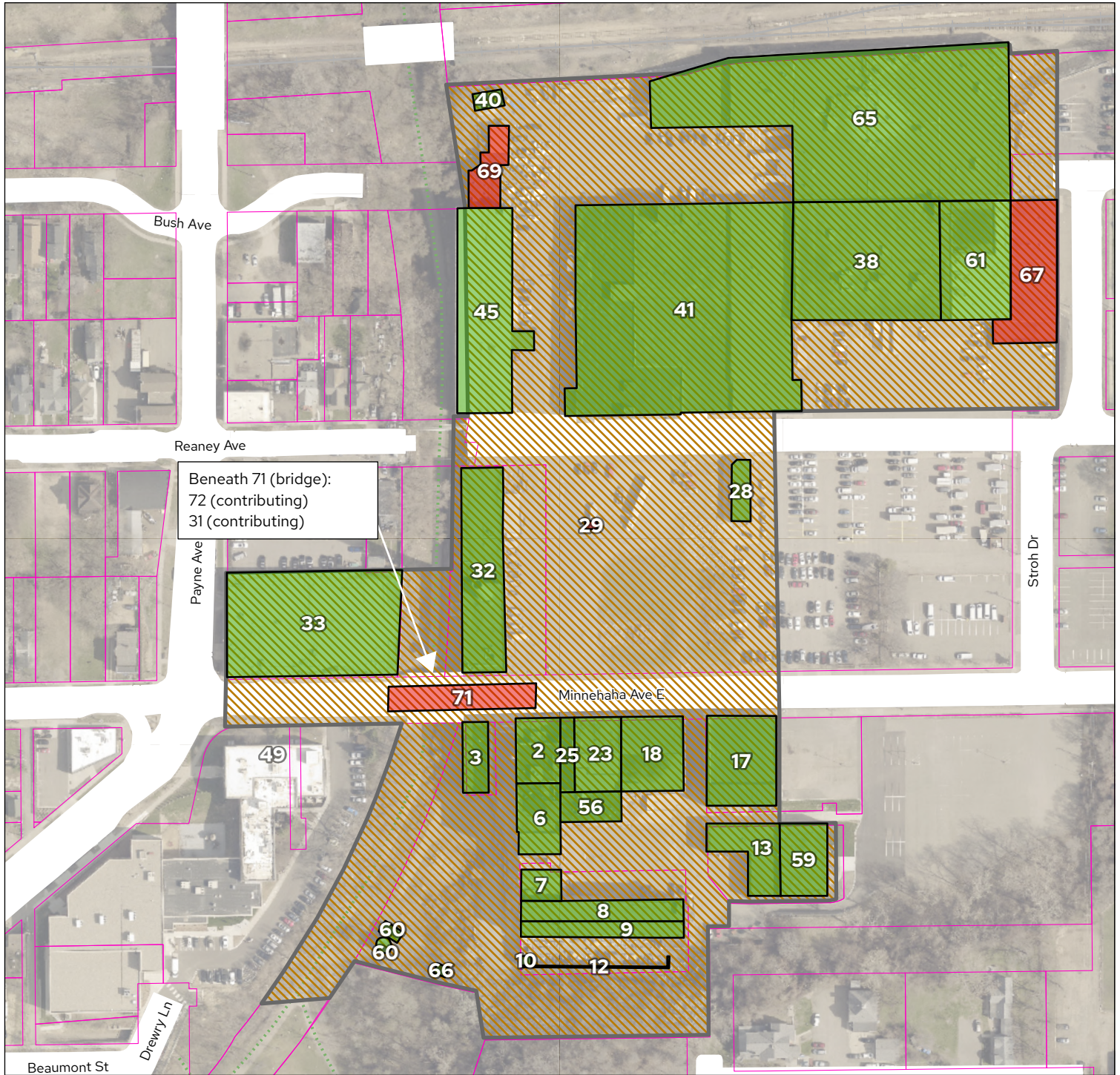


Theodore Hamm Brewing Company Historic District



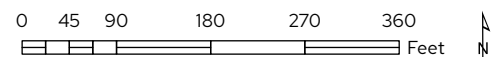
Date: 10/14/2025 4:42 PM Document Path: C:\Users\stb1\City of Saint Paul\FED - Data, Research & Mapping - Documents\Projects\Heritage Preservation\Designations\2025-10-14 - Hamm Brewery Local Designation Updates\M - GIS\Hamm Brewery Local Designation.aprx

#	Name	#	Name
2	Brew House (1892)*	23	Laboratory/Wort Cooler (1883)*
3	Grain Dryer (1951-53)*	25	Hop Storage (ca. 1900)*
6	Grit Storage (ca. 1893)*	28	Credit Union (1937)*
7	Racking Room (ca. 1893)*	29	Pump House No. 8 (1949)
8	Wash House (1901)*	31	Pump House No. 1 (ca. 1939)*
9	Carpenter Shop (ca. 1865)*	32	Power Plant (1933-34)*
10	Shavings Vault (ca. 1901)*	33	Garage (ca. 1936)*
12	Retaining Wall and Stairway (ca. 1901)*	38	Warehouse No. 1 (ca. 1953)*
13	Blacksmith/Machine/Paint Shop (1911)*	40	Diesel Engine House (1948 or earlier)*
17	Stock House No. 3 (1907)*	41	Bottling House (1901)*
18	Stock House No. 2 (1901)*	45	Warehouse No. 3 (1945)*

#	Name
56	New Brew House (1955-56)*
59	Electric and Pipe Shop (1957)*
60	Silo (ca. 1958, ca. 1960)
61	Wash House/Racking Facility (ca. 1962-63)*
66	Pump House No. 11 (ca. 1958)
65	Rail Shipping and Storage (1965)*
67	Sankey Building (1972)
69	Garage (ca. 1970)
71	Bridge (1978)
72	Oil House (1950)*

Years built shown in parentheses. Asterisks indicate contributing structures.

- Parcel Boundaries (for display only)
- Theodore Hamm Brewing Company - Local Historic District - Proposed
- Contributing resource to the historic district
- Non-contributing addition or resource to the historic district



Data: St. Paul Enterprise GIS; Parcel Polygons: current Ramsey County data via Minnesota Geospatial Commons; Road and Building Polygons: 2017 impervious surface dataset, Ramsey County; Water bodies via Minnesota DNR. This document was prepared by the Saint Paul Planning and Economic Development Department and is intended to be used for reference and illustrative purposes only. This drawing is not a legally recorded plan, survey, official tax map or engineering schematic and is not intended to be used as such.